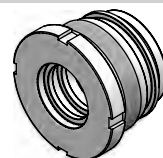
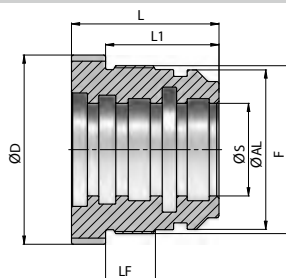


Kolbenstangführung

350 bar



Artikel-Nr.	ØAL	ØS	ØD	F	LF	L	L1	kg	Dichtsatz
902486	50	25	64	M54x1.5	22	55	45	0,66	693703
902487	50	30	"	"	"	"	"	0,54	693704
902480	50	35	"	"	"	"	"	0,41	694461
902488	60	30	74	M64x1.5	22	60	48	1,00	693711
902489	60	35	"	"	"	"	"	0,86	693713
902490	60	40	"	"	"	"	"	0,71	693712
902716	63	35	78	M68x1.5	22	60	48	1,04	
902717	63	40	"	"	"	"	"	0,89	693963
902718	70	35	84	M74x1.5	22	65	50	1,48	
902174	70	40	"	"	"	"	"	1,30	698574
902719	80	40	94	M85x2	25	75	60	2,18	694525
902175	80	45	"	"	"	"	"	1,94	698612
902176	80	50	"	"	"	"	"	1,69	698615
902177	90	45	109	M95x2	25	75	60	2,84	698635
902178	90	50	"	"	"	"	"	2,60	698670
902491	90	60	"	"	"	"	"	2,00	693700
902492	100	45	119	M105x2	25	75	60	3,80	693701
902179	100	50	"	"	"	"	"	3,50	698675
902180	100	60	"	"	"	"	"	2,95	698677
902181	110	50	129	M115x2	30	85	70	5,07	698686
902182	110	60	"	"	"	"	"	4,45	698690
902183	120	60	139	M125x2	30	85	70	5,68	698707
902184	120	70	"	"	"	"	"	4,95	698710
902493	120	80	"	"	"	"	"	3,96	693683
902494	125	70	144	M130x2	39	90	75	5,99	693729
902495	125	80	"	"	"	"	"	4,95	693993
900191	140	80	159	M145x2	40	90	75	7,22	692966
902496	140	90	"	"	"	"	"	6,21	693052
900192	140	100	"	"	"	"	"	5,08	692967
902497	150	80	169	M155x2	46	100	85	9,85	694048
902498	150	90	"	"	"	"	"	8,73	
902499	150	100	"	"	"	"	"	7,49	693838
902396	160	100	179	M165x2	46	100	85	9,43	692866
900193	160	120	"	"	"	"	"	6,43	692968
902720	180	100	215	M188x2.5	60	125	107	18,06	693948
902721	180	120	"	"	"	"	"	14,35	
902722	200	100	225	M208x2.5	60	125	107	23,63	
902723	200	120	"	"	"	"	"	19,92	693829
902724	200	140	"	"	"	"	"	16,03	
902725	220	120	245	M228x2.5	65	130	112	27,82	694566
902726	220	140	"	"	"	"	"	23,78	
902727	250	150	275	M258x2.5	80	150	130	37,42	694046
902728	250	180	"	"	"	"	"	27,73	
902729	300	150	335	M308x3	95	180	155	77,05	
902730	300	180	"	"	"	"	"	65,48	

Material : Stahl UNI C 40