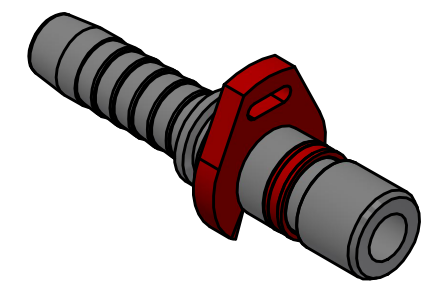
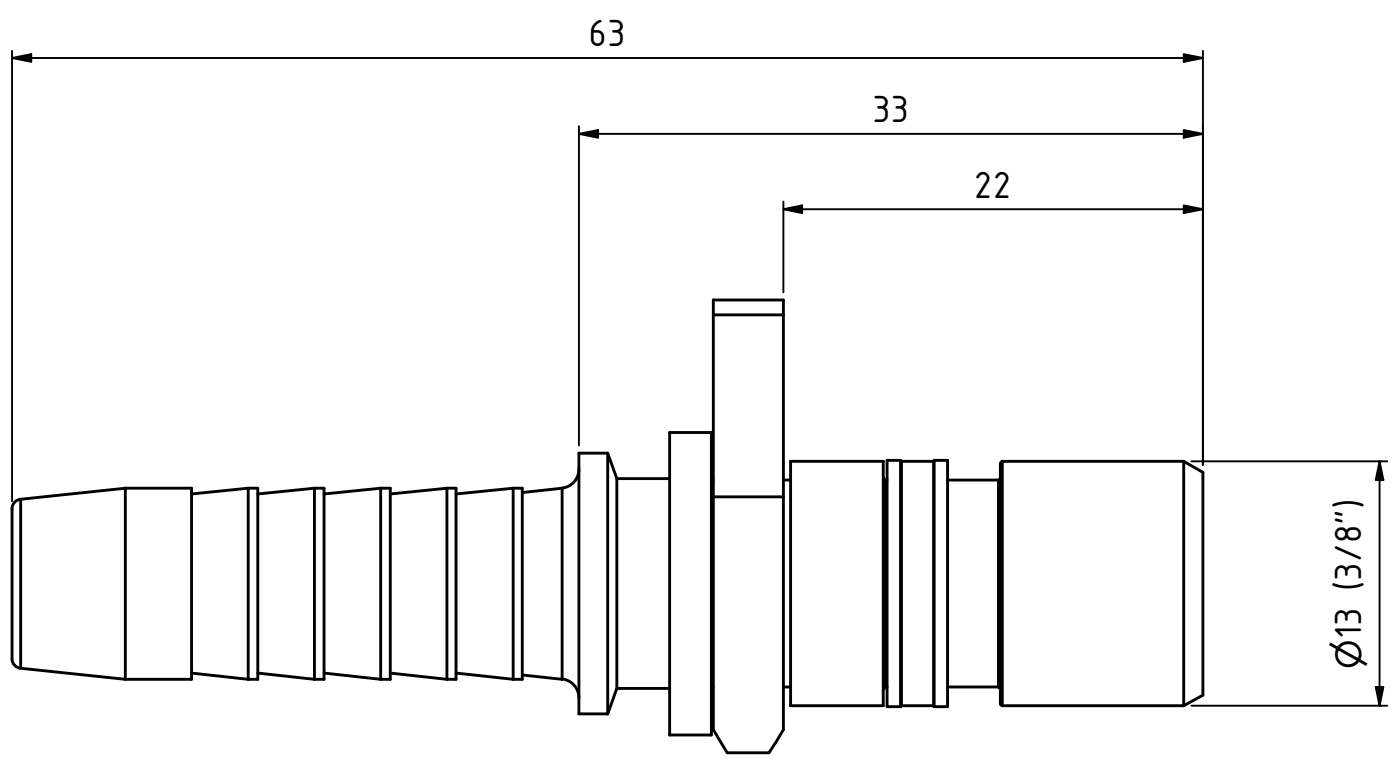


This document must not be copied, either completely or in part, without permission. Any infringement will have legal consequences ©




1 : 1



Product No. 147100606	
Nominal flow \varnothing DN:	7,0 mm
Connection Stroke:	mm
Max WP Connected:	350 bar
Max WP Disconnected:	bar
Min BP Connected:	1400 bar
Min BP Disconnected:	bar
Temperature range:	-30°C - +100°C
Connection:	Hose 3/8" 10,1mm
Sealing material:	
Hexagon:	

3	1	Assembly stop	POM
2	1	Release ring	POM
1	1	Nipple body	Hardn. steel, Plated
Item	Qty	Description	Material

State Production		Drawn EP7	Checked	Approved	Date 2017-04-24
 WEO Nipple DN 10 + 3/8" hose R1/R2		ECO	Former No.		Scale 5 : 2
		Drawing No. 147100606		Issue B	Sheet 1 / (1)

